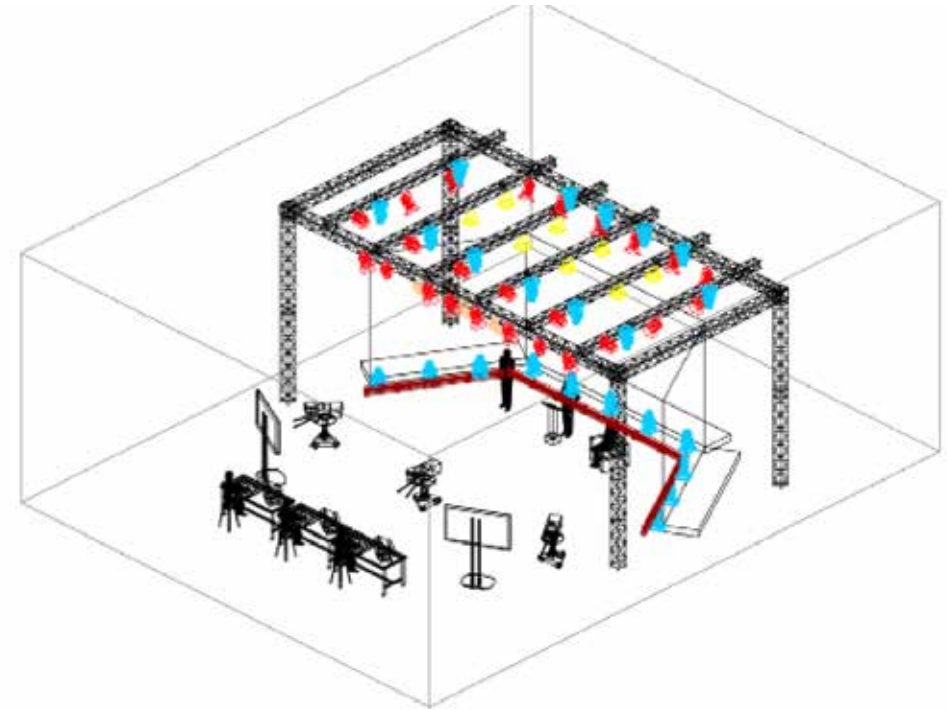


# XR STUDIO PACKAGE



**XR creates an immersive production experience within a real-time 3D workflow and stage simulator. Mixed Reality 'MR' combines camera tracking and real-time rendering to create an immersive virtual environment, visible live on set and shot directly in camera. This package offers a quality broadcast studio with an extended LED back-drop of 64sqm and full technical crew. This is a real studio package, allowing a full virtual environment, including broad lighting kit for in depth lighting and images with greater representation of height, width, and depth.**

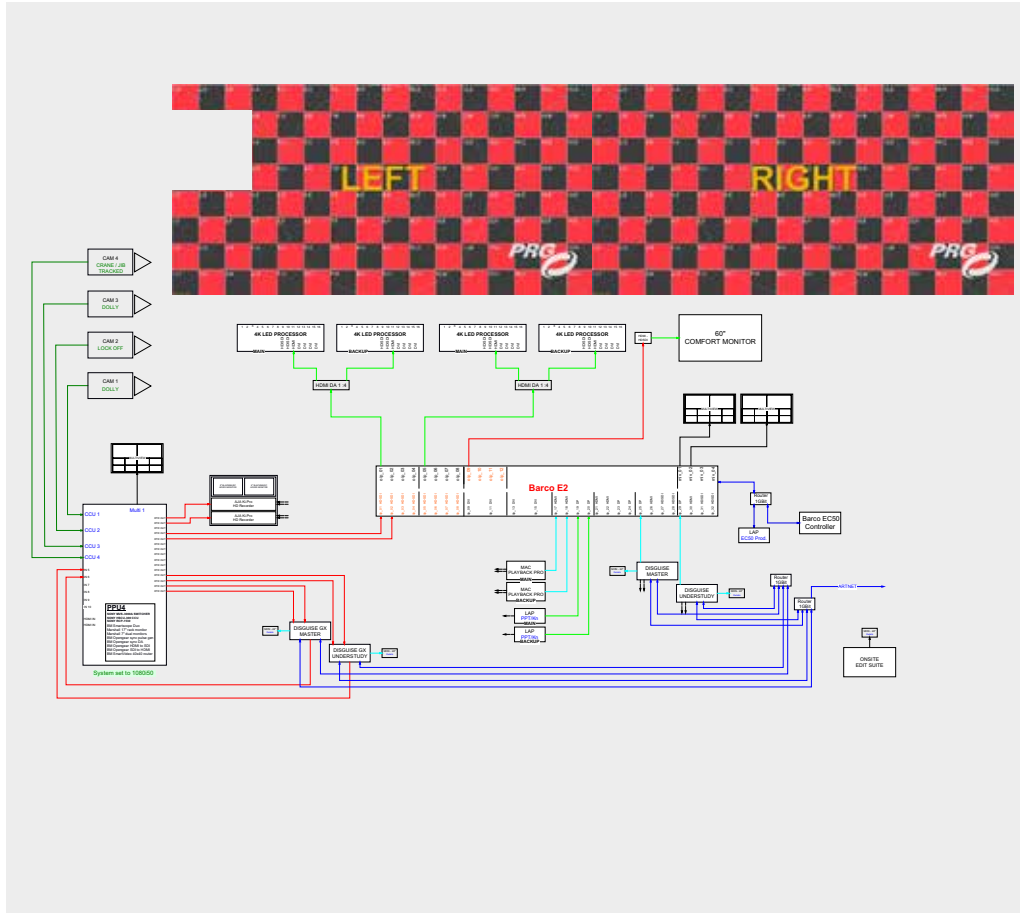


## SPECIFICATIONS:

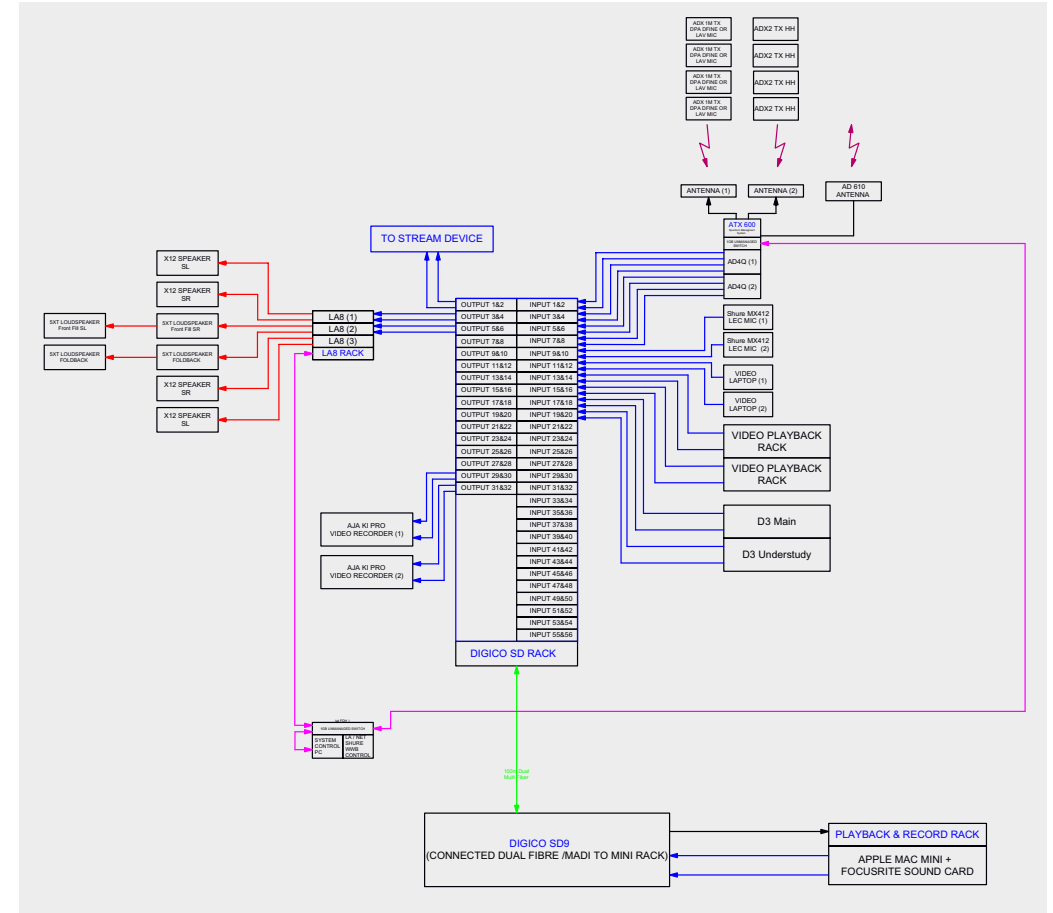
- 6 microphones
- 14 intercoms
- 8 speakers
- 4 in-ear kit
- 75 lighting fixtures
- 3 HD camera
- 1 tracked crane camera
- 1 TV screen monitor
- 2 playback player
- Video and sound recording
- 64m<sup>2</sup> LED backwall U-shaped
- 1 simple backdrop
- 1 speaker desk
- Rigging structure

# XR STUDIO PACKAGE

## VIDEO SCHEMATIC (example)

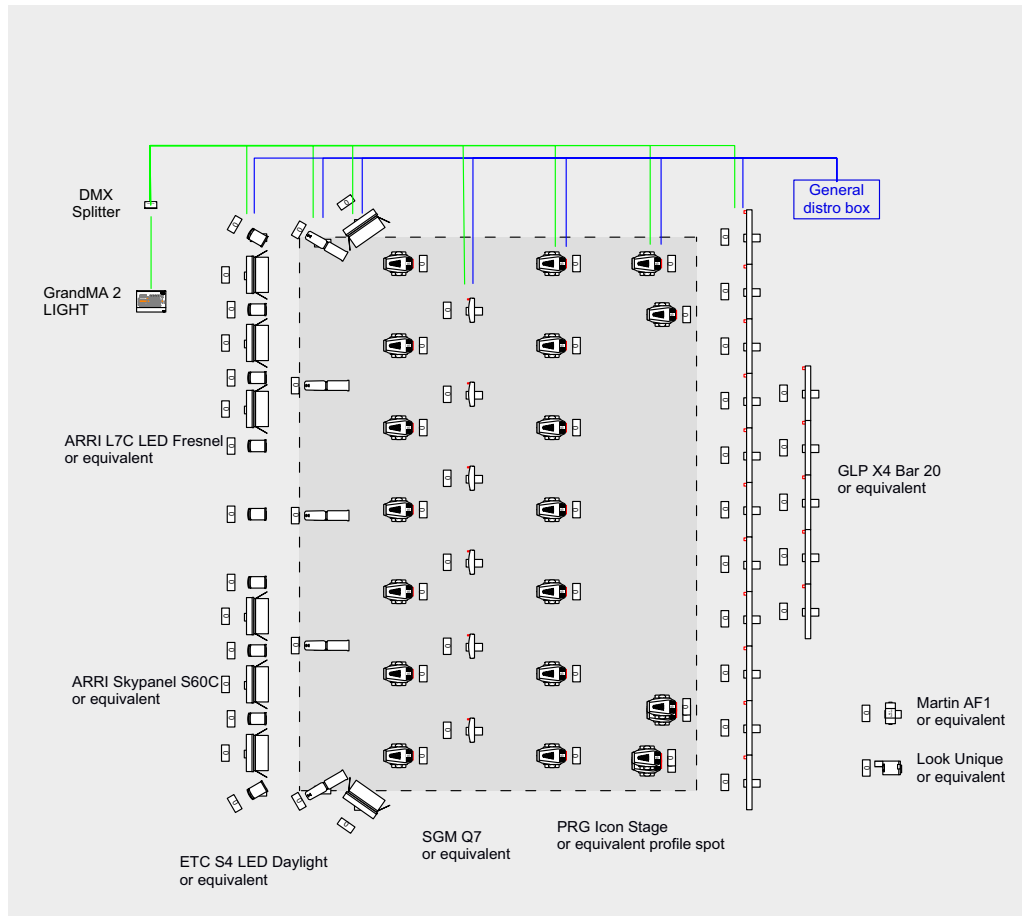


## AUDIO SCHEMATIC (example)



# XR STUDIO PACKAGE

## LIGHT SCHEMATIC (example)



# XR STUDIO PACKAGE

## TECHNICAL SHEET (example)

LIGHTING		
Quantity	Fixtures	Description
5	<b>PROFILE</b> LED ETC profile	Color temperature control 4000K - 6500K Angle from 5° to 90° available
18	<b>FRESNEL with barndoors</b> ARRI LED fresnel L7-C	Color temperature control 2800 K to 10000 K RGBW colors Minus green control
8	<b>SOFT LIGHT</b> ARRI skylpanel S60C	Color temperature control 2800K - 10000K Full color range Minus green control Beam angle 115°
6	<b>LED FLOOD LIGHT</b> SGM Q-7	RGBW Wash/blind/strobe light Full color range 28.000 lumens output Beam angle 100° Flicker-free
23	<b>MOVING LIGHT</b> PRG Icon Stage	LED Profile 14000 lumens output Full color range 7 rotating and 8 fixed gobos Extremely smooth and full field dimming Ultra quiet fixtures
15	<b>MOVING LIGHT striplite</b> GLP Impression X4bar 20	RGBW tilt and zoom striplite Full color range full pixel mapping control 210° tilt moving Motorized zoom for with angle from 7° to 50°
1	<b>HAZER</b> LOOK SOLUTIONS Unique 2	Haze density adjustable from the finest mist to the thick haze
1	<b>CONTROLLER</b> GRANDMA 2 light	Real-time control of fixtures Recording and playback of lighting scenes
2	<b>RIGGING STRUCTURE</b> H30V structure S36V structure	
SOUND		
Quantity	Device	Description
1	<b>MIXING DESK</b> Yamaha CL1 / Digico SD9 or equivalent	48 channels minimum with remote In/Out cards (Rio32 or equ) for easier setup
2	<b>GOOSENECK microphones for lectern</b> Shure MX-412-D/C	desk directional microphone with accessories (clamp, base, shock mount support)
2	<b>WIRELESS MICROPHONES KIT lavalier or headset</b> Lavalier Sennheiser MKE-40 DPA d:fine directional 4188 wireless mic kit such as Shure UR4D+ 4 chans	Clip-on cardioide 2 ears headset with flat-headed directional capsule UHF-R Wireless features Shure patented Audio Reference Companding for crystal-clear sound
4	<b>IN-EAR KIT</b> JEM Bodypack Sennheiser EK2000 G-W JEM Transmitter Sennheiser SR2050 G-W Earphones Shure E3	For speaker & MCs Fixed frequency banks with compatible presets and user banks 2 ears comfortable earphones
8	<b>SOUND SPEAKERS</b> PRG 8 active speaker, Mackie 12A or equivalent	
4	<b>STUDIO MONITORS</b> Yamaha MSP-5 or equivalent	Sound monitors for FOH / control room
1	<b>SOUND CUE PLAYER</b> Macbook with Cue-Lab or Digital performer software with sound card such as MOTU 828 Mk3	Cue sound playback Reliable, high quality & low latency sound card
1	<b>SOUND RECORDER</b> Digital-Recorder Tascam SS-CDR200	Stereo audio recorder ; MP3 encoder
1	<b>Full Digital INTERCOM KIT (6-wireless + 8-wired)</b> Digital Wireless kit (ie RIEDEL bolero or Clearcom Freespeak Digital wired kit ( RIEDEL performer or equivalent)	2 channels minimum

CAMERA		
Quantity	Device	Description
4	<b>HD camera</b> Sony Camera Kit HXC-100 HD Camera control unit	1 Fixed angle camera and 2 mobiles 1 tracked crane camera Full 1080 x 1920 effective pixels
1	<b>VIDEO MIXER</b> Panasonic AV-HS400 HD Live Video Switcher	up to 6 input and output chromakey, lumakey
VIDEO		
Quantity	Device	Description
64m²	<b>LED WALL U-shaped</b> Black Onyx 2	Pixel Pitch 2.84mm Pixel density 123904/sqm Superb visual Effect with high refresh rate, outstanding color processing and great contrast ratio
1	<b>CONFIDENCE MONITOR</b> 55" LED Samsung DM55E	Durable and extended 24/7 usage for continuous high performance with clear visibility 55" full HD screen
2	<b>RECORDER</b> AJA Recorder HDD/SSD Ki PRO Rack Docking station	Video recording on hard drive disk
1	<b>CONTROLLER</b> Barco E2	Screen management Superior image quality, great expandability and durability Supporting native 4K input and output 40 inputs via 8 input cards (Event Master series cards) Up to 18 output connectors among 4 output cards (Event Master series 2 cards)
2	<b>MEDIASERVER</b> Disguise D3	32 HD content layers Fast media transfer - 10Gb/sec Real-time rendering Can play up to eight HD layers of lossless Quicktime Animation. 4 video inputs / 5 video output 2 balanced XLR input / 2 balanced XLR output the real time render engine for graphics creation
1	Notch	
1	<b>VIDEO EDITING TOOL</b> Adobe creative suite	360° solutions to edit your video or content
2	<b>PLAYBACK PLAYER</b> Playback pro on macbook	
3	<b>LAPTOPS</b> LENOVO E570	
SCENERY		
1	<b>PLEXI LECTERN CURTAIN BACKDROP</b>	
LOGISTIC		
2	<b>Delivery</b>	90m³ + 40m³
2	<b>Pick up</b>	90m³ + 40m³
SERVICE		
1	<b>Insurance</b>	