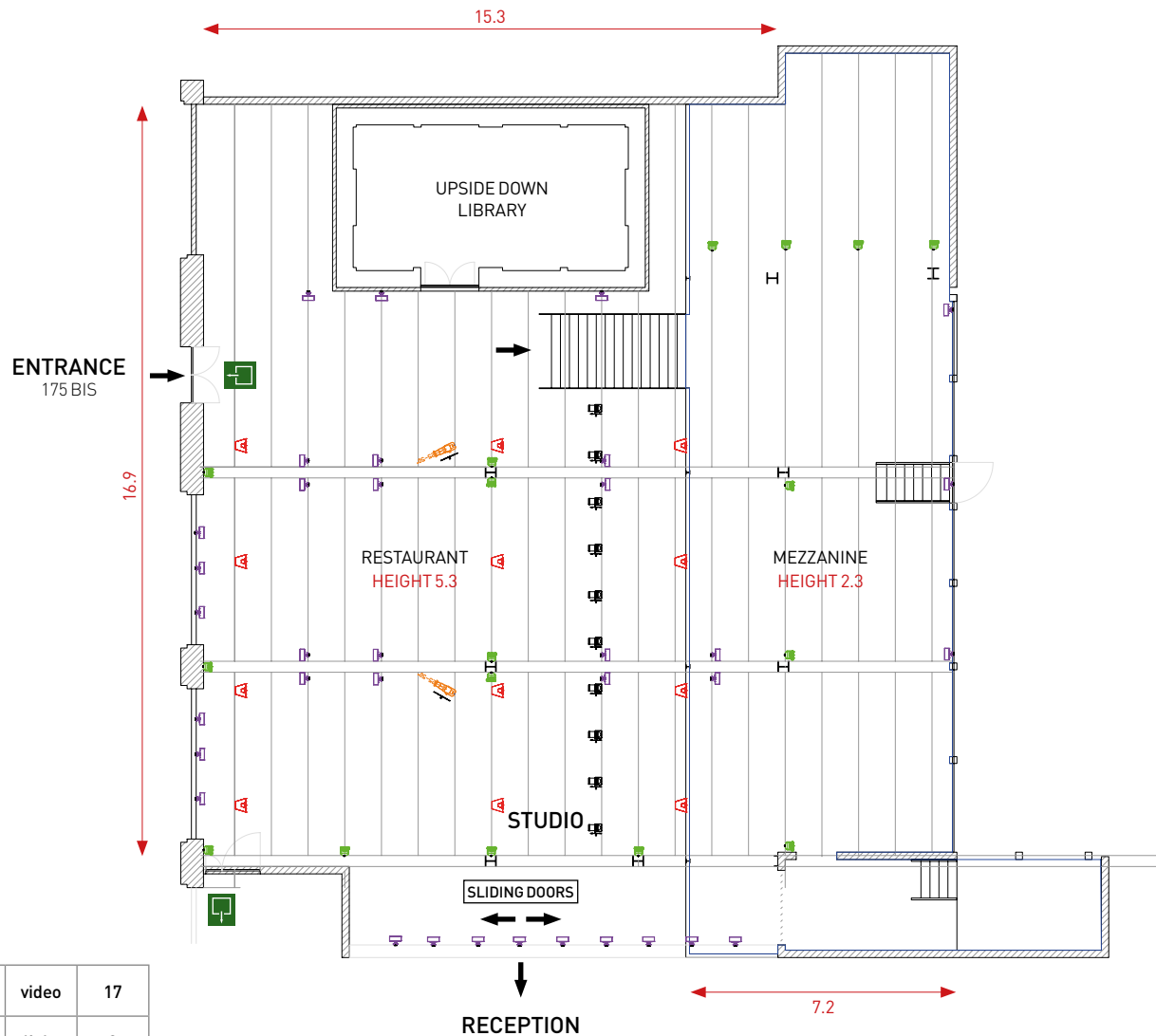


RESTAURANT • 300M²
MEZZANINE • 165M²



	Expolite TourLed 42	video	17
	ETC Profile Source four zoom 25°/50°	light	2
	LED CB-12 Powercore	light	36
	Thomas Par 56 Medium	light	10
	JBL Control 25 Black	sound	12

CONTACT FOR TECHNIC | **PRG**

Michel De Breucker | MDeBreucker@prg.com | +32 (0)479 60 85 59

THE EGG BRUSSELS

Rue Barastraat 175 • 1070 Brussels | +32 (0)2 726 55 26 | venues@eggbrussels.eu